



Colombia
Area: 30.000 hectares
Caquetá Department
Inga de Niñeras Indigenous Reservation and Monoquete Campesino Nucleus
9 indigenous and campesino communities



Ecuador
Area: 330.000 hectares
Waorani Territory
Waorani Territory Yasuni National Park Napo and Pastaza Provinces
10 Waorani communities



Peru
Area: 190.000 hectares
Ucayali Department
Comunal Reserve El Sira Atalaya Province
12 Ashéninka communities

A2.0 PARTNERS AND INTERVENTION AREA

Brazil

Area: 1.2 million hectares
Acre State
Mamoadate and Río Purús Indigenous lands, and Chandless State Park
4 indigenous peoples in 3 territories



Guyana

Region 8
Campbelltown, Micobie, Moruwa, Karisparu, Chenpou, Kopinang, Monkey Mountain
North Pakaraimas
7 indigenous communities



Suriname

Sipaliwini District
Indigenous lands and Maroon communities, Matawai Region
6 indigenous villages 10 maroon villages



REGIONAL PLATFORM



Technological

Collection and exchange of information through various tools, including the **web portal**, the **media library** and the **geo-viewer**.



Social

Local monitoring in territory; exchange of experiences and knowledge at various levels.

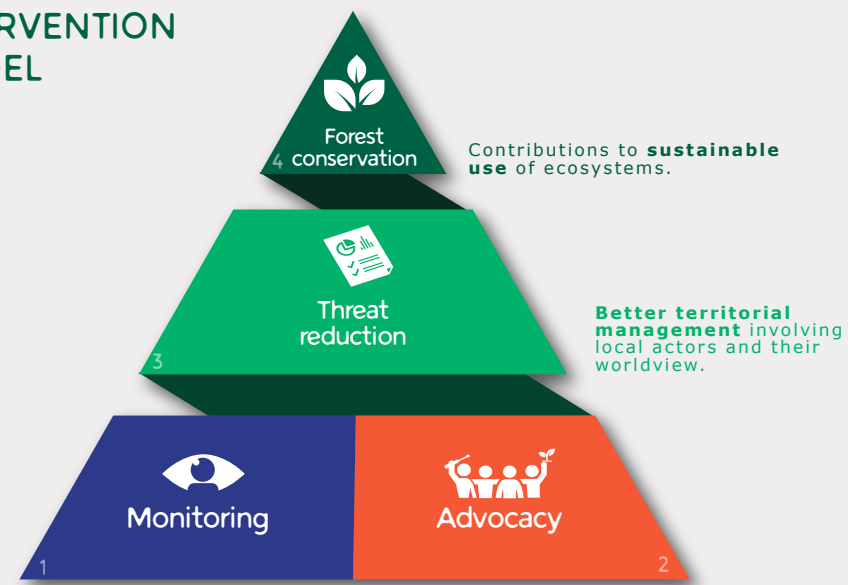
Financed by



Regional Coordination



INTERVENTION MODEL



DONE BY:
Indigenous, *campesino* and maroon communities.

SUPPORTED BY:
- NGOs.
- State agencies.
- Technical-academic institutions.

Decision-making at local, provincial and national levels.

MAJOR ADVANCES

47 monitoring units

420 thousand hectares monitored

57 monitors

1864 monitoring reports

21 agreements

5 REGIONAL STUDIES

191 workshops

4 REGIONAL webinars

2107 participants

13 internal sessions